

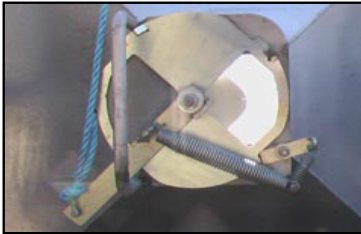
# Farm Pro

Simply The Best

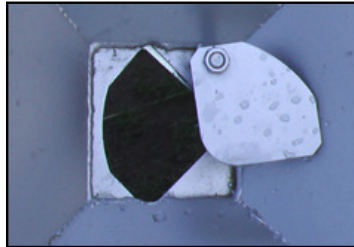
## Opti Bin 1.0 - 4.4m<sup>3</sup>

### Benefits

- Galvanised Steel Cone and **Hot Dipped Galvanized Chassie and Frame**
- Jockey Wheel on all Models
- 45 Degree Cone Angle on 2.2 and 4.4 m<sup>3</sup> Units
- Galvanised Mudguards on All Units
- Adjustable Choke in Cone to Vary Flow Rate
- Positive Rope Pull Open and Closed
- 39mm Round Dura Flex Axel on 1.3 m<sup>3</sup> Units, 40mm Square on 2.2m<sup>3</sup> units all Other Units 45mm



**Rotating Disc**



**Control Choke (Standard)**

- 1.3 m<sup>3</sup> Units Can Be Conveniently Towed By a ATV or UTV (Subject to Manufacture Specifications)
- 4.4m<sup>3</sup> Unit has standard 2 x 2.2m<sup>3</sup> compartments to make feeding large mobs or mixing grains simple.



**2.2 m<sup>3</sup> Sprung**

- 16" 5 Stud Ford Off Road Tyres or 15" 5 Stud Ford, Sunrasia Highway Tyres
- All Tandem Units Have LED Lights and Wiring
- Easily Upgrade to Remote Control Electric Rams
- Adjustable and Serviceable Control System's
- Easy To Clean And Wash Out. All Galvanised



**1.3 m<sup>3</sup> Sprung**



**2.2 m<sup>3</sup> Sprung**



**3.2 m<sup>3</sup> Tandem**



**4.4 m<sup>3</sup> Tandem, Twin Bin**

**Australian Designed, Manufactured & Supported**

[www.farmpro.com.au](http://www.farmpro.com.au)  
[sales@farmpro.com.au](mailto:sales@farmpro.com.au)

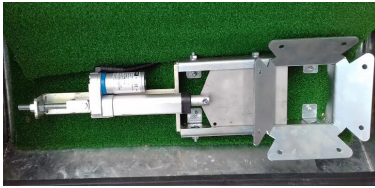
Ph 03 5495 3101 ; 20 Kell Road, St Arnud Victoria 3478

\*\*Options and Specifications subject to change due to constant product improvement\*\*

# Farm Pro

Simply The Best

## Options

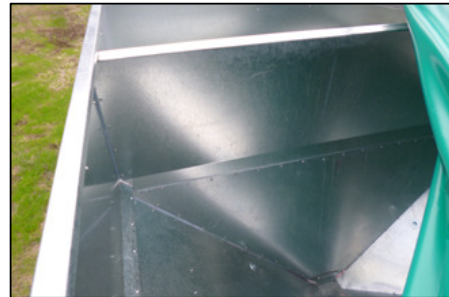


**Electric Rams**



**Position Controls**

- Divider Can Be Fitted To 2.2m<sup>3</sup> Units and Above To Use Two Feeds
- Bungi Cord Poly, Heavy Duty, Roll Top Tarp or Metal Cover Available For Most Units
- 12 Volt Wireless Remote Control Electric Ram Open and Close (Multi Position)
- Electric LED Lights And Wiring (Standard on Tandem Wheel Units)
- Override Disk Brake (Standard on 3.2m<sup>3</sup> and 4.4m<sup>3</sup> Units)



**Divider**



**Metal Cover**

## Specifications

### Single Bin, Single Axel

**Cone Sizes:** 1.5m W x 1.5m L x 1.6mm

**Chassis:**  
75 x 50 mm RHS

**Overall Length:** (Including Tow Pull)  
1.3 & 2.2 Units                      3.200m

**Overall Height (Side)**  
1.3 Unit:                      1.200m  
2.2 Unit:                      1.750m

**Overall Width:** (Mudguards)  
1.3 Unit                      1.670m  
2.2 Unit                      1.860m

**Weight**  
1.3 Unit                      230 kgs  
2.2 Unit                      260 kgs

**Wheels & Tyres:**  
15" Ford, S/H Highway (1.3 Single Axel)  
16" Ford, S/H Off Road (2.2 Single Axel)

### Single Bin, Tandem Axel

**Cone Sizes:** 1.5m W x 1.5m L x 1.6mm  
**Cone Sizes:** 1.8m W x 1.8m L x 1.6mm

**Chassis:**  
100 x 50 mm RHS

**Overall Length:** (Including Tow Pull)  
2.2 & 3.2 Units                      3.400m  
Twin Bin 4.4 Units                      4.600m

**Overall Height (Side)**  
2.2 Unit:                      1.750m  
3.2 Unit:                      1.730m

**Overall Width:** (Mudguards)  
2.2 Unit                      1.860m  
3.2 Unit                      1.890m

**Weight**  
2.2 Unit                      360 kgs  
3.2 Unit                      626 kgs

**Wheels & Tyres:**  
15" Ford, S/H Highway (2.2 Tandem Axel)  
16" Ford, S/H Off Road (3.2 Tandem Axel)

### Twin Bin, Tandem Axel

**Cone Sizes:** 1.5m W x 1.5m L x 1.6mm

**Chassis:**  
150 x 50 mm RHS

**Overall Length:** (Including Tow Pull)  
2.2 & 3.2 Units                      3.400m  
Twin Bin 4.4 Units                      4.600m

**Overall Height (Side)**  
4.4 Unit:                      1.950m

**Overall Width:** (Mudguards)  
4.4 Unit                      1.890m

**Weight**  
4.4 Unit                      710 kgs

**Wheels & Tyres:**  
16" Ford, S/H Off Road (Tandem Axel)

**03 5495 3101, 0429 953 101**

[www.farmpro.com.au](http://www.farmpro.com.au)

[sales@farmpro.com.au](mailto:sales@farmpro.com.au)

\*\*Options and Specifications subject to change due to constant product improvement\*\*